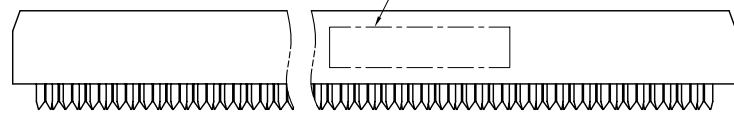
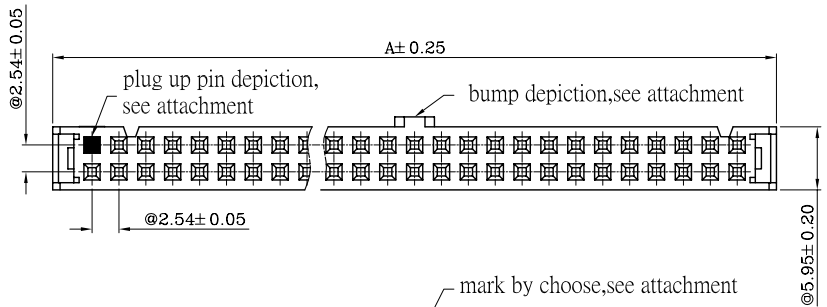
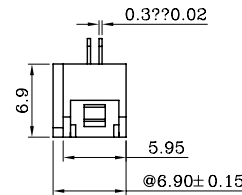
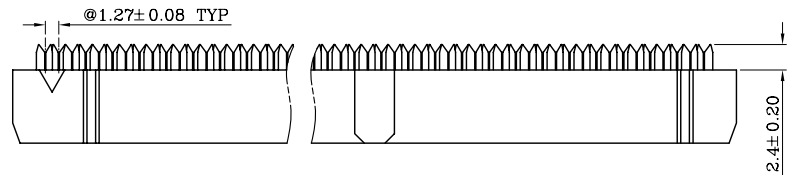
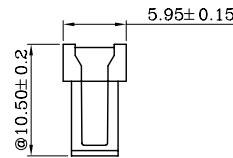
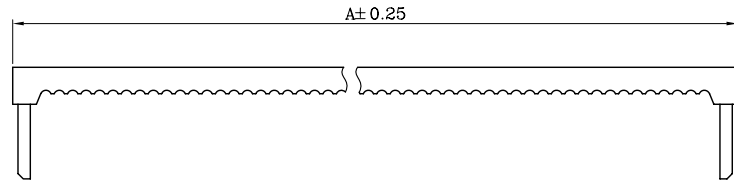
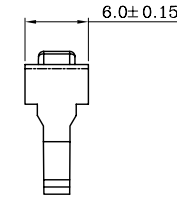
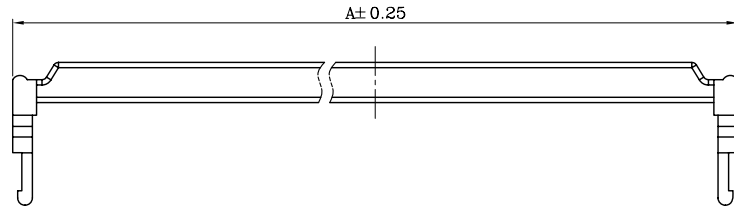
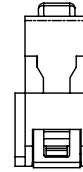
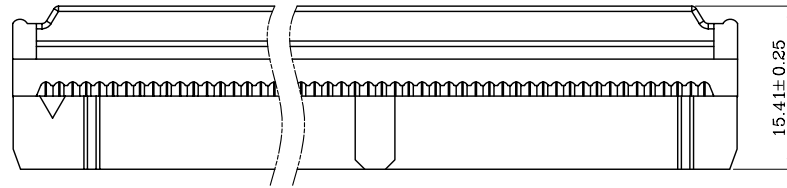


R.O.H.S.



Position	Dimension A	Position	Dimension A
6	12.1	28	40.1
8	14.7	30	42.6
10	17.3	32	45.1
12	19.8	34	47.7
14	22.3	40	55.6
16	24.8	44	60.5
18	27.5	50	68.4
20	29.9	60	81.2
24	34.9	64	86.2
26	37.6		

Note:

- <1>.Plastic material :PBT+G/F,UL 94V-0.
- <2>.Contacts material : copper alloy.
- <3>.Plating: 30-50 u" nickel plating under,au plated on gold plating area ,see following.
- <4>.External must be non-damage non-fading
- <5>.The "@" dimension must by QC.
- <6>.Operating temperature:-20°C~85°C.
- <7>.Current Rating:1.5 Amp.
- <8>.Insulation resistance:1000 MΩ Min.
- <9>.Dielectric voltage: 300V AC for 1 minute.
- <10>.Product Number :

PIN Numbers see table

A00 ** ** ** ** **
 -01 ROHS
 -02 SONY
 Number see the attachment
 00:PBT+25%GF
 01:PBT+30%GF
 01 Brass bronze gold 1u"
 02 Brass bronze gold 3u"
 05 Brass bronze gold 15u"
 06 Brass bronze gold 30u"
 07 Phosphor bronze gold 1u"
 09 Phosphor bronze gold 5u"
 11 Phosphor bronze gold 15u"
 12 Phosphor bronze gold 30 u"
 22 Brass bronze gold 40u"



CHING JIHMOLDING CO., LTD
 KEENTOP INTERNATIONAL ENTERPRISE CO., LTD

ITEM

FC CONNECTOR
 PH:2.54mm